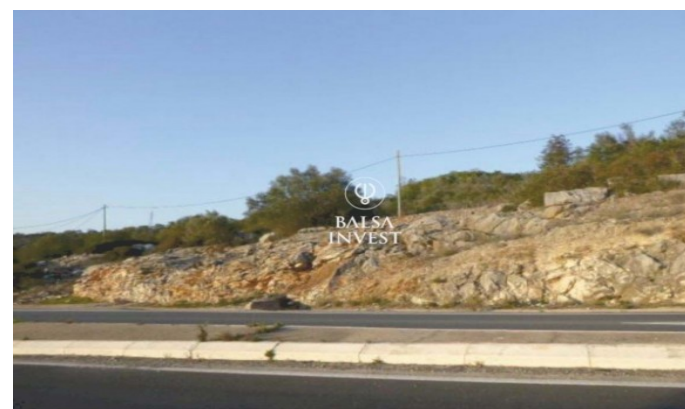
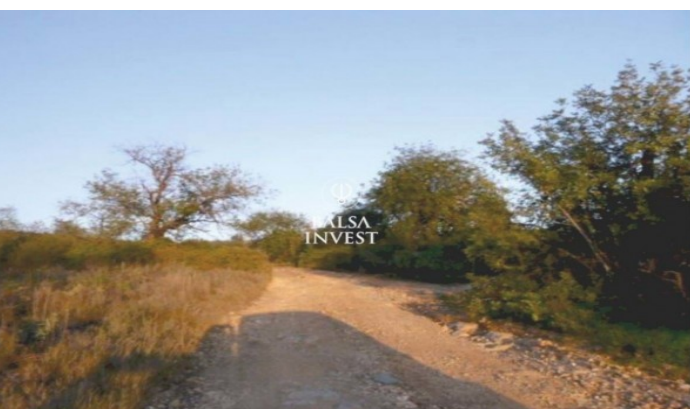




UK, Spain, Villamartin and Portugal Offices
<https://www.girasolhomes.com/>
For full office details please refer to the contact page on the website



€139,000

Ref: 675614

o Infante), registered as land for mineral

- Reference: 675614

Property Description

Urban land with 32,966 sq.m very close to the Boliqueime access point to the A22 (Via do Infante), registered as

land for mineral extraction or agriculture.

The land is classified in the PDM of Loulé as an Extractive Industries Area.

Features:

- Land area - 32.966 sqm
- Energy Certificate - Exempt - Excluded from the ECS under article n.4 of Decree-Law 118/2013, of 20th of August

Call us for more information.

BALSA INVEST. Reliable Businesses.

