



## 2 Bed Apartment For Sale

Faro, Algarve, Portugal

€265,000

Ref: GHT1967260

\* On Market \* 2 Beds \* 2 Baths

New 2 bedroom apartment with 56m2 terrace located in Montenegro, Faro.  
The property is under construction, is inserted in a new urbanization, close to all services.

The apartment is located on the ground floor in a 3-storey building wit

- Property Type: Apartment
- Bedrooms: 2
- Bathrooms: 2
- Reference: GHT1967260
- Build/Unit: 56 sq m



# Property Description

New 2 bedroom apartment with 56m2 terrace located in Montenegro, Faro.  
The property is under construction, is inserted in a new urbanization, close to all services.

The apartment is located on the ground floor in a 3-storey building with an elevator, comprising:

- Two bedrooms, one en suite with shower base
- A large living and dining room
- An equipped kitchen with the possibility of being able to choose open-space
- Two Bathrooms
- Air conditioning in all rooms
- A generous terrace at the apartment level with 56 m2
- A parking space in the basement with storage
- Elevator
- Solar panel
- Barbecue
- Automatic blinds
- Floating floors in bedrooms, living room, corridor and hall
- Pre-installation of fireplace
- Sanitary ware suspended
- High security entrance door
- Pre-installation of home automation (smart home) and surround sound
- Frames and windows with double glazing and thermal cut

One of the advantages of purchasing the apartment under construction is the fact that you can still choose the materials, equipment and finishes to your liking.

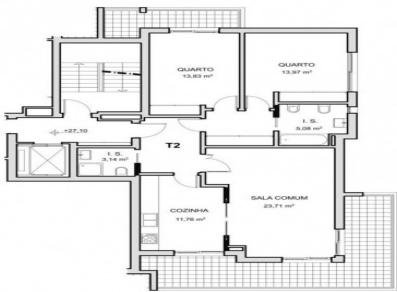
It is an excellent opportunity for first home or to monetize.

The location is excellent, it has great access, close to schools, kindergartens, cafes, restaurants, supermarkets, pharmacy, post office and health center.

It is also two minutes from Faro Airport, 5 minutes from Faro Beach, 10 minutes from Private Hospital and the University of Algarve.



3º DIREITO



ÁREA ENCERRADA	97,93 m <sup>2</sup>
COTA-PARTE DE ÁREAS COMUNS	10,90 m <sup>2</sup>
ÁREA DE TERRAÇOS	28,41 m <sup>2</sup>
TOTAL	137,24 m <sup>2</sup>

ESCALA 1:100

